

Disley

Description and Drawings

Product Code;
BL907

Product Name;
Enya

Verified by; Ken
Issue No 2

Fabric Details;-45CVCX45CVC 135X72. 55% cotton 45% polyester.

Fabric Colour Lt Blue CVC. **Weight** 115gms.

Block Pattern Reference BL907

Date;30-01-17

Page 3 of 8

- 2 piece Ladies Collar with Edge top stitch. 5cm collar point finish on presentation Collar style as LL402, 6mm Tie space, Interlining handles as per second sample.
- Placket front x 2.5cms Interlining as per second sample.
- Hem button side x 2.5cms [Chain Stitch] no interlining.
- Round cuff with 2 buttons and 2 button-holes [Horizontal] Taped sleeve opening with 2 cuff pleats.
- Over-locked arm-holes, Princess panels and side seams x 5 threads.
- Princess panels 5mm top stitched.

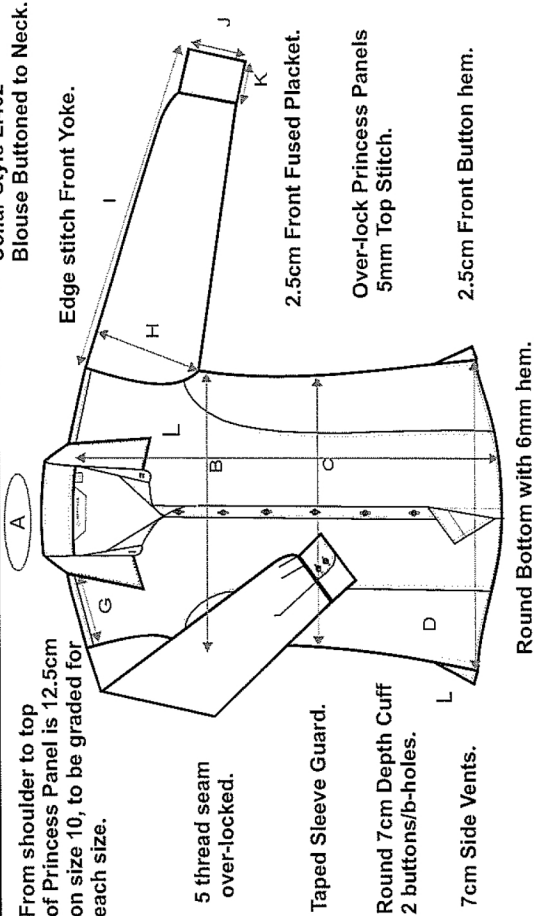
7. Edge stitch front yoke.
8. Two back pleats.
9. Round tail bottom, with 6mm double turned hem.
10. Mitre Heritage Label, attach to centre neck.
11. Size Label matching position 1cm from neck label [LHSAW]
12. Stitch count, 12 to 14 stitches per 2.5cms.
13. Blouse buttoned to neck.
14. One spare button attach to wash care label.

Button Spacing, first button, 6cms from collar seam to centre button.
8.5cms spacing for balance.

From shoulder to top of Princess Panel is 12.5cm on size 10, to be graded for each size.

Collar Style LI402

Blouse Buttoned to Neck.



5 thread seam over-locked.

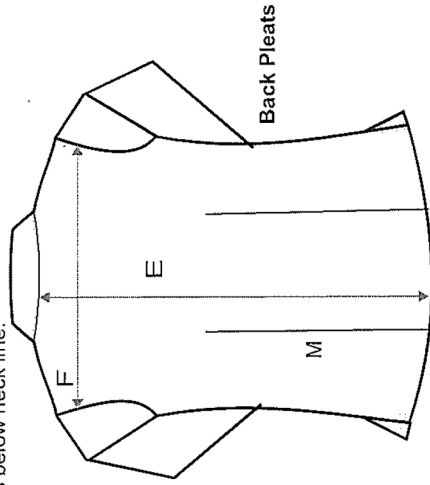
Taped Sleeve Guard.

Round 7cm Depth Cuff 2 buttons/b-holes.

7cm Side Vents.

Round Bottom with 6mm hem.

Across back measurement is taken 12cms below neck line.



Back Pleats