

Williams.

Description and Drawings

Product Code;
HB202

Customer Disley

Verified by; Ken
Issue No 5

Fabric Details.-34TCX34TC 130X76. 65%polyester-35%cotton-TTP3199.

Fabric Colour Blue, Weight 155gms.

Block Pattern Reference CM15

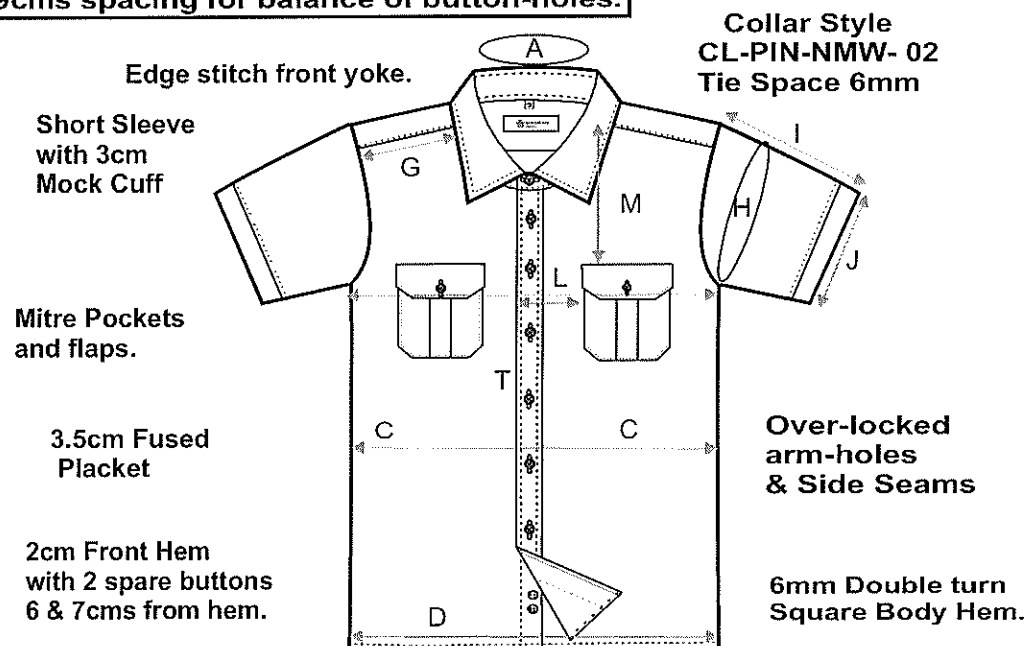
Date; 24-08-17

Page 4 of 8

1. 2 piece Classic Collar with 5mm top stitch. Collar style ref; CL-PIN-NMW 0.2 with plastic collar stays/bones, 6mm Tie space, Etaisa interlining Quality ref; Model ET352W [Medium] Patch ET352W [Hard] -BIAS band ET352W [Hard]
2. 3.5cm fused front placket, with 5mm top stitching, Etaisa interlining ET352W [Soft]].
3. 2cm front button stitched hem.
- 4 Short Sleeve with 3cm Mock cuff, top stitched 5mm..
- 5.Over-locked arm-holes and side seams x 5 threads.
6. 2 spare buttons, position on front buttoned hem.

7. 2 ply Back yoke. [plain back]
8. Square tail bottom, with 6mm double turned hem.
- 9.6 button-hole front from size 14 to 16.5, and 7 button-holes from size 17 up
10. Williams New Label, 2,5cms from neck seam, +or- 5mm, with size label..
11. Mitred Pocket and Flaps.
12. Flaps and Epaulettes. Etaisa interlining ref; ET352M [Hard] .
13. Stitch count, 12 to 14 stitches per 2.5cms.
14. Edge stitch front and back yoke.

Button Spacing, first button 6cms from collar seam to centre button.
9cms spacing for balance of button-holes.



Yoke Depth 9cms

Edge stitch back yoke.

