

Disley

**Description
and Drawings**

Product Code; BH905	Fabric Details.-45CVCX45CVC 135X72. 55%cotton 45%polyester.		
Product Name; Enya	Fabric Colour White CVC. Weight 115gms.		
Verified by; Ken Issue No 2	Block Pattern Reference BH905	Date;30-01-17	Page 3 of 8

1. 2 piece Ladies Collar with Edge top stitch. 5cm collar point finish on presentation Collar style as LL402, 6mm Tie space, Interlining handles as per second sample.
2. Placket front x 2.5cms Interlining as per second sample.
3. Hem button side x 2.5cms [Chain Stitch] no interlining.
4. Short Sleeve with fused 2.5cm strap hem and edge stitch top and bottom, with ruck Gathering, 2 buttons & 1 button-holes for adjusting sleeve width, 5mm top stitch seam, 6cm vent opening with bar tack.
5. Over-locked arm-holes, Princess panels and side seams x 5 threads.
6. Princess panels 5mm top stitched.

7. Edge stitch front yoke.
8. Two back pleats.
9. Round tail bottom, with 6mm double turned hem.
10. Mitre Heritage Label attach to centre neck.
11. Matching Size Label position 1cm from neck label [LHSAW]
12. Stitch count, 12 to 14 stitches per 2.5cms.
13. Blouse buttoned to neck.
14. One spare button attach to wash care label.
15. Side vents x 7cms.

Button Spacing, first button, 6cms from collar seam to centre button.
8.5cms spacing for balance.

**Collar Style LL402
Blouse Buttoned to Neck.**

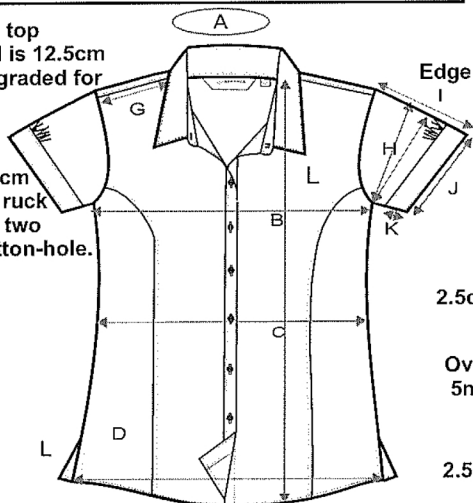
From shoulder to top of Princess Panel is 12.5cm on size 10, to be graded for each size.

Edge stitch Front Yoke.

S/sleeve with 2.5cm Fused hem, with ruck gartering, vent & two buttons and 1 button-hole.

5 thread seam over-locked.

7cm Side Vents.



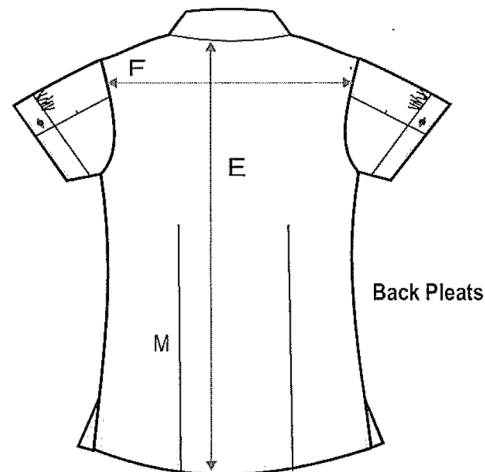
2.5cm Front Fused Placket.

Over-lock Princess Panels
5mm Top Stitch.

2.5cm Front Button hem.

Round Bottom with 6mm hem.

Across back measurement is taken 12cms below neck line.



Back Pleats