

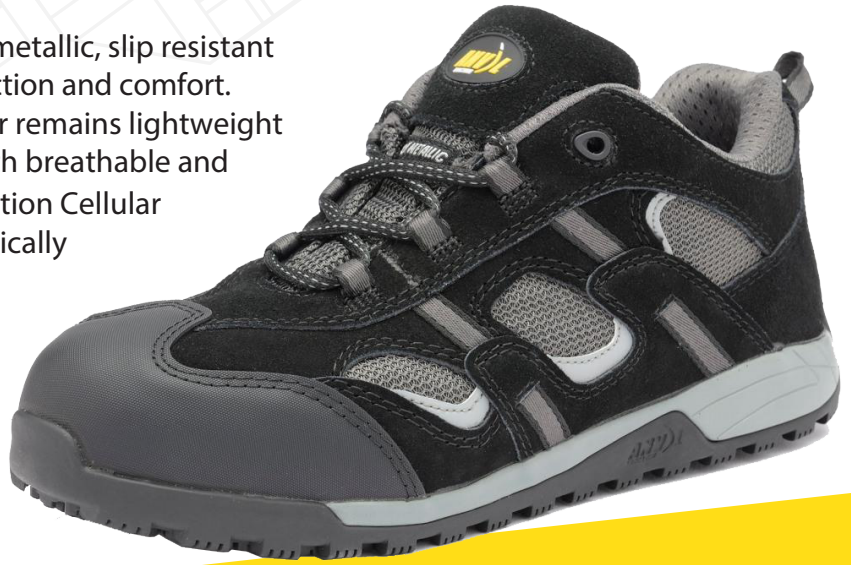
JACKSON SB E FO SRC

SIZE RANGE
UK3-13 (EU36-48)

CERTIFICATION
EN ISO 20345:2011

WIDTH FITTING
eeee

The Jackson is a high performance, non-metallic, slip resistant safety trainer offering outstanding protection and comfort. The composite toecap ensures the trainer remains lightweight whilst the suede and mesh upper are both breathable and durable. The Jackson also features a 'Traction Cellular Footbed', which is a full length, ergonomically designed footbed that as well as offering cushioning and improved fit, aids with pressure displacement and weight distribution, maximising wearer comfort for long working days.



COMPOSITE
TOECAP



COMFORT
FOOTBED



BREATHABLE
UPPER



HEEL ENERGY
ABSORPTION



SRC RATED
OUTSOLE



LIGHTWEIGHT



PULL ON
HEEL LOOP



NON
METALLIC



FUEL OIL
RESISTANT



PU
MIDLAYER

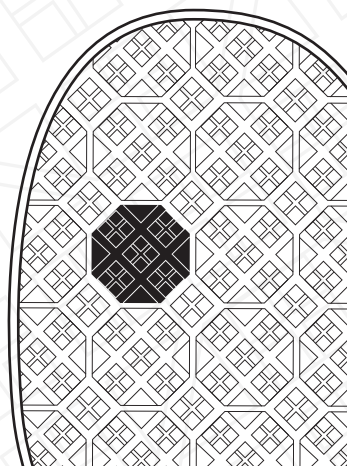
UPPER
Breathable, suede and mesh upper, providing excellent durability and comfort.

LINING
Breathable, high quality mesh lining keeping feet fresh all day long.

PROTECTION
Outstanding composite toecap protection.

FOOTBED
A full length, ergonomically designed footbed with embedded 'Traction Cellular Technology' that aids with pressure displacement and weight distribution.

OUTSOLE
The 'Plane outsole' is a fuel oil resistant rubber outsole that demonstrates outstanding slip resistance which exceeds minimum average SRC requirements by 70%.



SLIP RESISTANCE

exceeds
minimum average
requirement by
+70%

Minimum average req. 0.23

ANVIL TRACTION average result 0.39

ANVIL TRACTION
EXPERT IN SLIP RESISTANT FOOTWEAR

Anvil Traction can support your global requirements via our network of directly employed staff and distributors around the world. Please contact us for further information.

anvil@tripal.global
+44 (0) 1933 423 380

Anvil Traction, 16 Don White Road, Wellingborough, Northants, NN8 4FT, UK. --- WWW.ANVILTRACTION.GLOBAL