

# ROCKFORD 2

## S1 P SRC

**SIZE RANGE**  
UK3-13 (EU36-48)

**CERTIFICATION**  
EN ISO 20345:2011

**WIDTH FITTING**  
eeee



Rockford 2 is a high performance mid-cut boot which offers unrivalled protection with a composite toe and penetration resistant midsole ensuring the boot remains lightweight. It features a highly breathable leather and canvas upper and an antistatic construction that reduces the build-up of static electricity within the body. Rockford 2 also features a Traction Cellular footbed. This is a full length, abrasion resistant, ergonomically designed footbed which as well as offering cushioning and improved fit, aids with pressure displacement and weight distribution, maximising wearer comfort and making it the perfect choice for all day wear.



COMPOSITE TOECAP



COMFORT FOOTBED



PENETRATION RESISTANT MIDSOLE



HIGH QUALITY LEATHER UPPER



SRC RATED OUTSOLE



LIGHTWEIGHT



ANTISTATIC



NON METALLIC



FUEL OIL RESISTANT



EVA MIDLAYER



HEEL ENERGY ABSORPTION



HEEL SUPPORT



BREATHABLE UPPER

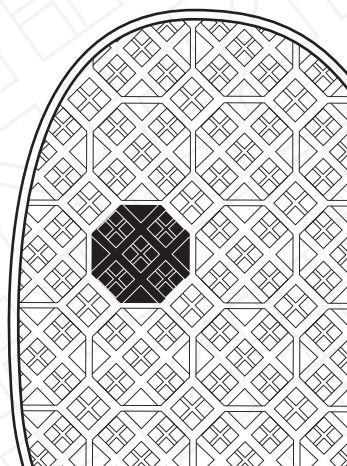
**UPPER**  
Breathable, leather and mesh fabric upper, providing excellent durability and comfort.

**LINING**  
Breathable, high quality mesh lining keeping feet fresh all day long.

**PROTECTION**  
Outstanding composite toecap protection and non metallic penetration resistant insole plus antistatic construction.

**FOOTBED**  
A full length, ergonomically designed footbed with embedded 'Traction Cellular Technology' that aids with pressure displacement and weight distribution.

**OUTSOLE**  
The 'Clipper 2 outsole' is a fuel oil resistant and antistatic rubber outsole that demonstrates outstanding slip resistance which exceeds minimum average SRC requirements by 178%.



## SLIP RESISTANCE

exceeds minimum average requirement by  
**+178%**

Minimum average req. 0.23

ANVIL TRACTION average result 0.64

**ANVIL TRACTION**  
EXPERT IN SLIP RESISTANT FOOTWEAR

Anvil Traction can support your global requirements via our network of directly employed staff and distributors around the world. Please contact us for further information.

anvil@tripal.global  
+44 (0) 1933 423 380

Anvil Traction, 16 Don White Road, Wellingborough, Northants, NN8 4FT, UK. --- WWW.ANVILTRACTION.GLOBAL