

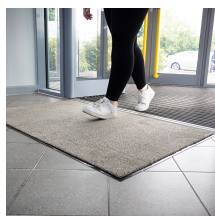


Enviro-Plush

A more environmentally friendly option for your doorway



- This entrance mat is made of 100% recycled yarn carpet surface.
- The backing is made from a combination of 80% PVC and 20% recycled rubber.
- The manufacturing process supports a circular economy and reduces waste as the mats are made from small plastic beads or flakes that are melted to create polyester yarn. This process uses 70% less energy and 85% less water.
- Effectively traps moisture, dirt, and debris to keep internal floors clean.
- Machine washable at 30°C for easy maintenance.
- The anti-slip rubber backing helps keep the mat in place.
- Available in beige and anthracite to complement various interiors.
- Features a cut pile 'wool look' for a stylish appearance.
- Tufted with a 5/32" process and 85,000/m² tuft density for longevity.
- Absorbs 2.4 liters of liquid per m².
- Features 'tear resistant' edging for a finished look and added stability.
- Suitable for low to medium-traffic areas indoors.



Styles Available



Anthracite

Beige

Parts

Part Number	Size	Colour	Weight (kg)
EP010604	1.2 m x 1.8 m	Anthracite	5.8
EP010603	0.8 m x 1.5 m	Anthracite	3.2
EP010602	0.8 m x 1.2 m	Anthracite	2.57
EP010601	0.6 m x 0.8 m	Anthracite	1.45
EP010504	1.2 m x 1.8 m	Beige	5.8
EP010503	0.8 m x 1.5 m	Beige	3.2
EP010502	0.8 m x 1.2 m	Beige	2.57
EP010501	0.6 m x 0.8 m	Beige	1.45

Technical Specifications

Material	Recycled yarn carpet pile with recycled rubber backing.
Recycled Material Content %	100% Recycled polyester and 20% Recycled rubber & Vinyl flexcoat
Product Height	8,5 mm
Environmental Resistance	Dry indoor environment
Typical Applications	Internal entrance areas

Get in touch | To order FREE samples or arrange a site visit please call +44 (0)1788 228 555 or email sales@coba.com

www.coba.com