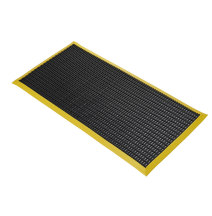
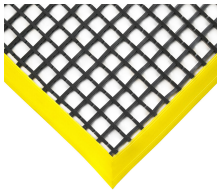


COBAmat® Workstation

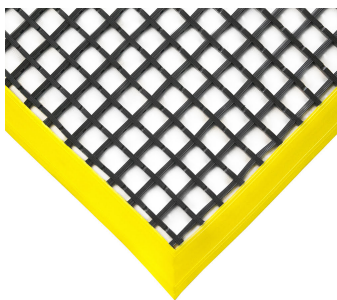
Reduce slipping with this handy individual version of COBAmat®



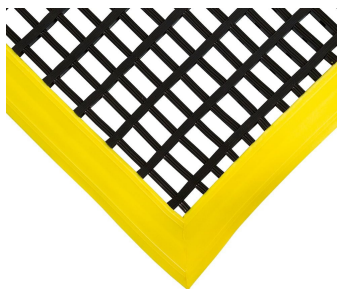
- Vinyl mat offering all the inherent benefits of COBAmat®, but in an individual mat.
- Bright yellow safety bevelled edging all round to reduce trip hazards and highlight location.
- Standard hole sized option is ideal for trapping swarf and debris.
- Standard: 22 mm x 22 mm hole size / Heavy: 22 mm x 10 mm hole size.
- Fire tested to BS EN 13501-1 and slip tested to DIN 51130.



Styles Available



Standard



Heavy Duty

Part Number	Size	Colour	Weight (kg)
WS010703	1.2 m x 1.8 m	Black/Yellow	9.7
WS010702	1.0 m x 1.5 m	Black/Yellow	6.7
WS010701	0.6 m x 1.2 m	Black/Yellow	3.3
WD010703	1.2 m x 1.8 m	Black/Yellow	13.15
WD010702	1 m x 1.5 m	Black/Yellow	8.85
WD010701	0.6 m x 1.2 m	Black/Yellow	4.4

Material	PVC
Surface Finish	Cross ribbed lattice
Product Height	12 mm
Hole Size	Standard: 22 mm x 22 mm. Heavy: 22 mm x 10 mm.
Min. Operating Temperature	-20°C
Max. Operating Temperature	+60°C
Resistance to Chemicals	PVC is resistant to many different chemicals, alkalis and general industrial chemicals. PVC resists alcohols, aliphatic hydrocarbons, oils, weak acids, strong mineral acids and alkalis. PVC resists oil and grease if properly cleaned. PVC does not resist organic solvents, ketones, esters and aromatic hydrocarbons. Please contact us for more specific details
Environmental Resistance	Suitable for wet and dry environments, indoors or outdoors
UV Resistance	Resistant to UV
Typical Applications	Standard - Ideal for all industrial environments, especially machine tool areas where swarf is in abundance. Heavy - Ideal for all industrial environments, especially in machine tool areas of high traffic and where pallet trucks/trolleys are in use
Installation Method	Loose lay
Accessories	All mats come with factory fitted bevel edges to prevent trip hazards. Fixing cubes are available to secure the mat to the floor.
Cleaning Method	Easily cleaned with hot soapy water/pressure washer
Slip Tested to	DIN 51130 - R10

Additional Information



Workstation Fire Test BS EN 13501



Workstation Fire Test EN ISO 11925



Workstation Fire Test EN ISO 9239



Workstation Ramp Slip Test DIN 51130

Get in touch | To order FREE samples or arrange a site visit please call +44 (0)1788 228 555 or email sales@coba.com

www.coba.com