

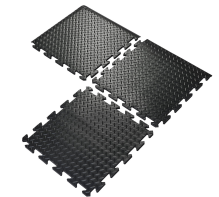
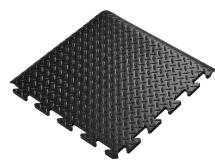
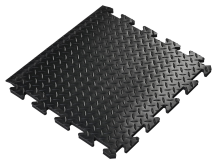
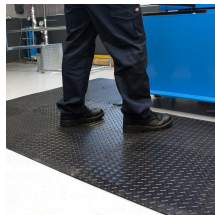


Deckplate Connect

Interlocking dual-layer anti-fatigue mat



- Highly durable workplace matting with excellent anti-fatigue properties.
- Interlocking tile modules designed to cover unusual or large floor areas.
- Simply connect mats together in any configuration to create a seamless anti-fatigue surface.
- Surface structure provides good anti-slip protection.
- Comfortable foam 'cushion' backing for fatigue relief.
- Ramped edges reduce the risk of trips.
- Easy to install, clean and replace.
- Fire tested to BS EN 13501-1.



Parts

Part Number	Size	Colour	Weight (kg)
DP010010	50 cm x 50 cm	Black	2
DP010009	50 cm x 50 cm	Black	2
DP010008	50 cm x 50 cm	Black	2

Technical Specifications

Material	PVC
Backing	PVC foam (fusion bonded, not glued)
Surface Finish	Diamond pattern
Product Height	15 mm
Min. Operating Temperature	0°C

Max. Operating Temperature	+60°C
Resistance to Chemicals	The PVC top surface provides limited resistance to chemicals and oils
Environmental Resistance	Suitable for dry indoor environments
Typical Applications	Packing stations, Assembly areas, Production lines where regular turning occurs
Installation Method	Loose lay
Cleaning Method	Brush/mop the top surface
Fire Tested to	BS EN 13501-1 Class Dfl - s1
COO (Country of Origin)	CN
Notes	Please ensure Deckplate Connect is laid on a smooth floor surface to ensure integrity of connections

Get in touch | To order FREE samples or arrange a site visit please call +44 (0)1788 228 555 or email sales@coba.com

www.coba.com