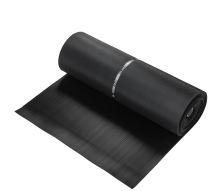
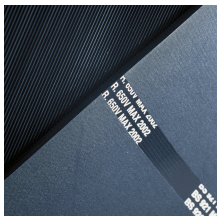
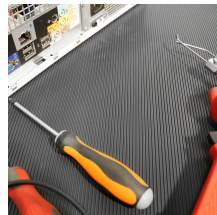


COBASwitch

Specialist safety matting for high voltage areas



- Designed specifically for use in front of live switchboards and high voltage equipment for personal protection against electrical shocks.
- Ribbed rubber surface provides extra underfoot grip.
- Rubber has effective electrical insulating properties. (See individual volt testing.)
- 6 mm tested to 11,000 volts for 450 volt rated working.
- 9 mm tested to 15,000 volts for 650 volt rated working.
- 9 mm conforms to BS921/1976.



Parts

Part Number	Size	Colour	Weight (kg)
SM0112059	1.2 m x 5 m (9 mm)	Black	67
SM0112056	1.2 m x 5 m (6 mm)	Black	44.1
SM0109056	0.9 m x 5 m (9 mm)	Black	55.2
SM010013	0.9 m x 5 m (6 mm)	Black	31
SM010040C	1.2 m x per linear metre (9 mm)	Black	13.4
SM010040	1.2 m x 10 m (9 mm)	Black	134
SM010030C	0.9 m x per linear metre (9 mm)	Black	11.04
SM010030	0.9 m x 10 m (9 mm)	Black	110.4
SM010020C	1.2 m x per linear metre (6 mm)	Black	8.82
SM010020	1.2 m x 10 m (6 mm)	Black	88.2

Technical Specifications

Material	Natural rubber base polymer
Surface Finish	Fine fluted ribs
Product Height	6 mm, 9 mm
Roll Length	10 m
Min. Operating Temperature	-20°C
Max. Operating Temperature	+80°C
Environmental Resistance	Suitable for dry indoor environments
Typical Applications	High voltage areas, Open switchboards
Installation Method	Loose lay
Cleaning Method	Hose down or pressure wash using a mild

Part Number	Size	Colour	Weight (kg)	detergent
SM010010C	0.9 m x per linear metre (6 mm)	Black	6.88	
SM010010	0.9 m x 10 m (6 mm)	Black	62	

Additional Information



Cobaswitch to BS921 Report 7M0598701 - March 2010

Get in touch | To order FREE samples or arrange a site visit please call +44 (0)1788 228 555 or email sales@coba.com

www.coba.com