

DATA SHEET

MODEL : 55H6221

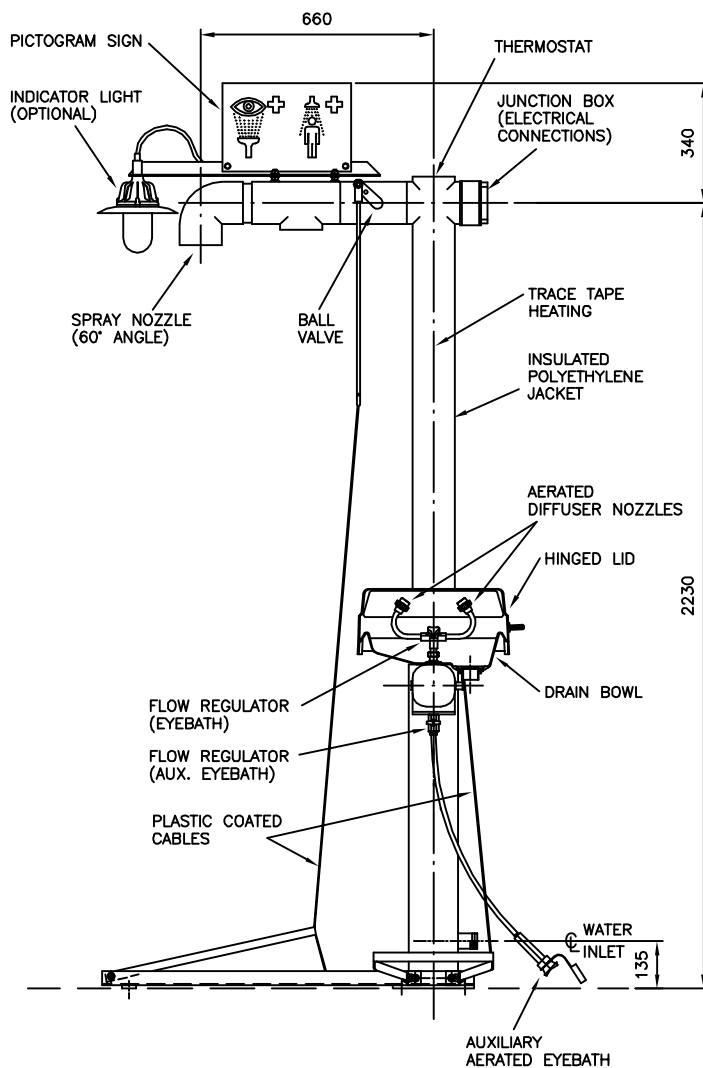
Free standing trace heated emergency safety shower with additional eye, face and hand wash. The shower is fitted with a tough outer jacket surrounding pre-insulated metal pipe-work. Pulling the stainless steel handle, which opens a one-inch valve, operates the shower. The shower is fitted with a self-draining spray nozzle. The eye bath unit is constructed from corrosion resistant plastic. Features include operation by lifting the plastic lid which actuates the ½" valve giving constant water flow at 2.2 bar g and the lid also keeps the unit free from contamination when closed. There is full adjustment to the aerated water using the flow controller. Fitted to the side of the unit is a hand held diffuser on a flexible hose suitable for treating disabled or unconscious personnel. All units are fitted with a mirror for the operative to check that any contamination has been cleared from their eyes after flushing. The inner standpipe is heated using 10w/m trace tape fitted with an ambient air-sensing thermostat to prevent the water overheating, suitable for either Safe Area or Zone 1&2 classifications.

MATERIAL	DESIGN FEATURES
2" internal pipe-work either galvanised or stainless steel	Strength against impact
1" valve either brass or stainless steel.	75 l/min flow rate at 2.2 bar g
½" valve either brass or stainless steel	30 l/min flow rate at 2.2 bar g
Eye bath bowl and lid yellow plastic	Corrosion resistant
½" inline brass Y-strainer with stainless steel mesh filter	Strength against impact
Chrome plated aerators with mesh strainers	Corrosion resistant
Polyethylene green outer jacket	Impact and corrosion resistant

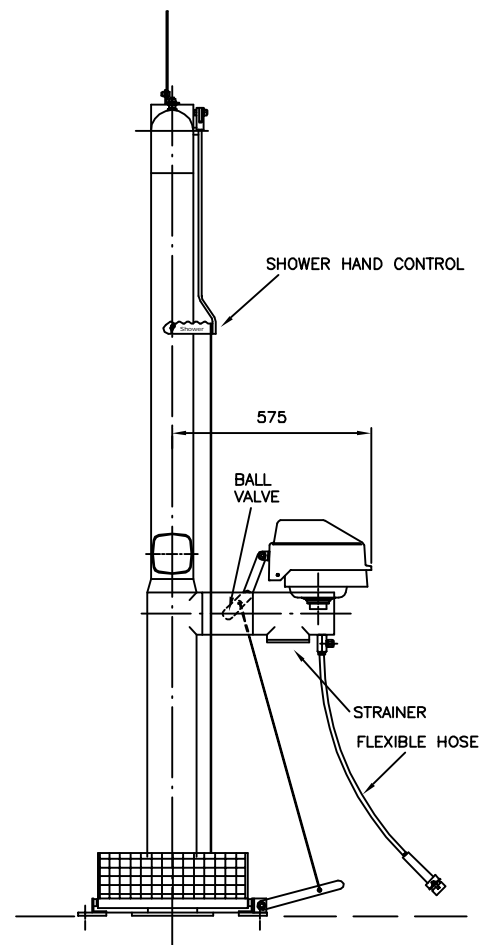
OPTIONS (Please indicate if required by marking the box next to the option)

Platform operation to the shower				
Treadle operation to the eye and face wash				
Waste pipe to the floor from the eye and face wash				
Shower and eye wash sign with mounting bracket				
Unit voltage	110v		230v	
Indicator light	Safe Area		Zone 1&2	
Proximity switch	Safe Area		Zone 1&2	

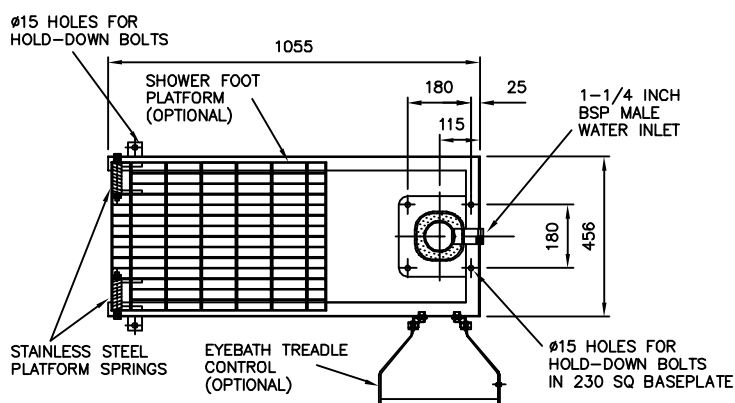
Galvanised or stainless steel pipe-work		Galv.		St/St	
SERVICES					
M20 cable entry to junction box Water inlet 1¼" BSP male Four base plate holes suitable for M12 fixings					
For dimensions, please request GA Drawing					
Please request a copy of the IOM manual for site installation information. ISO 9000 and CE (where applicable) certification available on request.					
AUTH:	SLA	DATE:	12/03/02	REV:	01



SIDE VIEW



FRONT VIEW
(INDICATOR LIGHT
OMITTED FOR CLARITY)



VIEW ON BASEPLATE

FROST PROTECTED SELF-SUPPORTING
SHOWER WITH EYEBATH/FACEWASH FOUNTAIN.

ARCO 55H6221