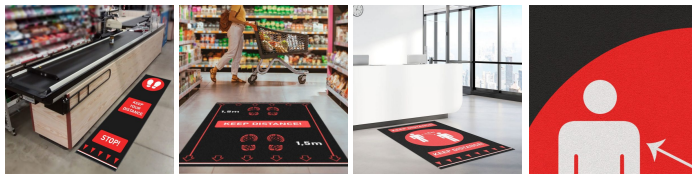




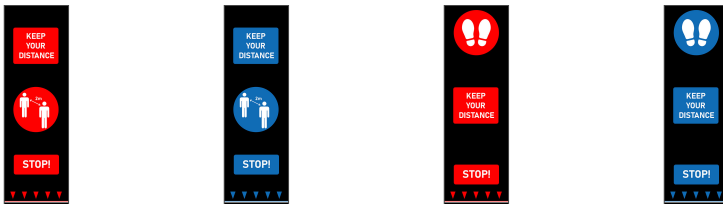
## Social Distancing Floor Mats

Loose lay floor mats to promote social distancing available in standard and bespoke designs and sizes

- Communicate social distancing rules to your staff or customers to reduce coronavirus spread.
- Ideal for all public buildings including hospitals, supermarkets, offices.
- Cost effective and durable way to demonstrate that you take health and safety seriously.
- Printed digitally for superb colour reproduction and definition.
- Low profile borders to reduce the risk of trips.
- Machine washable at 30°C.
- Mats stay in place thanks to vinyl backing, but can also be relocated and washed unlike floor stickers.
- Delivery of bespoke mats in 3 weeks. Standard designs available from stock.
- Product Height: 6 mm.



### Styles Available



### Parts

Part Number	Size	Colour	Weight
SDM010001	0.65 m x 2 m - People	Red	3.51 kg
SDM030001	0.65 m x 2 m - People	Blue	3.51 kg
SDM010002	0.65 m x 2 m - Footprints	Red	3.51 kg
SDM030002	0.65 m x 2 m - Footprints	Blue	3.51 kg
SDM000005	0.6 m x 0.9 m	Full colour	
SDM000005	0.6 m x 2 m	Full colour	
SDM000005	0.9 m x 1.2 m	Full colour	
SDM000005	0.9 m x 1.5 m	Full colour	
SDM000005	0.9 m x 2 m	Full colour	
SDM000005	1.6 m x 3 m	Full colour	

### Technical Specification

<b>Material</b>	PA
<b>Backing</b>	Vinyl
<b>Surface Finish</b>	Velour
<b>Product Height</b>	6 mm
<b>Product Weight</b>	2.7kg/m <sup>2</sup> (tolerance 100g/m <sup>2</sup> )
<b>Pile Height</b>	4 mm
<b>Mat Edge</b>	Stock mats will have a vinyl edge. Bespoke mats can be supplied with or without an edge.
<b>Absorbency</b>	1.1/ m2
<b>Pile Yarn Composition</b>	100% PA

## Parts

SDM000005    Bespoke sizes available    Full colour

---

## Technical Specification

**Pile Weight**    0.4kg/ m2

---

**Operating Temperature**    -10°C to +50°C

---

**Resistance to Chemicals**    Good

---

**Environmental Resistance**    Suitable for indoor environments only

---

**Typical Applications**    Reception desks, Checkouts, Entrance areas, Retail locations

---

**Installation Method**    Loose lay

---

**Cleaning Method**    Machine wash at 30°C

---

**Country of Origin**    Belgium

---

**Coating Thickness**    2 mm

---

**Tuft density**    189,000/ m2

---

**Manufacturing process**    Tufting cut pile – digitally printed

---

Get in touch | To order FREE samples or arrange a site visit please call +44 (0)116 240 1088 or email [sales@cobaeurope.com](mailto:sales@cobaeurope.com)