

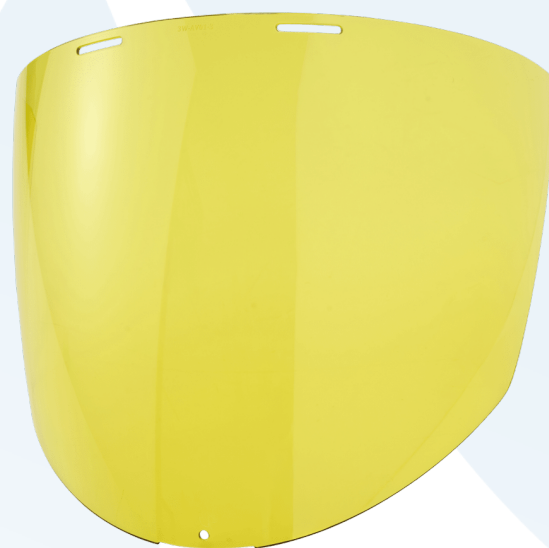
Sentinel P APR Amber Visor

Enhances visibility and contrast in low-light or indoor environments

The Sentinel Amber Visor is designed to enhance visibility and contrast in low-light or indoor environments while providing reliable eye and face protection. The amber-tinted lens improves visual clarity by reducing glare and increasing contrast, making it ideal for inspection, maintenance, and detailed assembly work.

Features

- ▲ Amber-tinted visor for improved contrast and visual clarity in low-light conditions
- ▲ Compatible with Sentinel Helmet and faceshield systems
- ▲ Optical-grade clarity for unobstructed
- ▲ Quick and easy replacement to maintain performance
- ▲ Replacement part



Certifications

CAT III



Suitable industries & applications

Industries

- ▲ Chemicals
- ▲ Construction
- ▲ Healthcare

- ▲ Manufacturing
- ▲ Maritime

Applications

- ▲ Demolition
- ▲ Disease and Infection Control
- ▲ Multi Purpose
- ▲ Vessel Construction and Maintenance
- ▲ Woodwork and Fabrication

Europe

sales@globus.com
+44 (0)161 877 4747
+44 (0)161 877 4746

Middle East & Africa

sales.gcc@globusgroup.com
+971 4 882 9962
+971 4 882 9963

Americas

salesusa@globusgroup.com
+1 83 337 54747

Sentinel PAPR Amber Visor

Enhances visibility and contrast in low-light or indoor environments

Ordering information

| Item | Items per Case |
|------------|----------------|
| SKR00034LZ | 50 x Pieces* |

* CE and EN12941-rated only when used as part of the Sentinel PAPR system

Product information

| | |
|--------|-------|
| Colour | Amber |
|--------|-------|

Additional information

Certification legend



or click [here](#)

Declaration of conformity



or click [here](#)

View product online



or click [here](#)

Europe

sales@globus.com
+44 (0)161 877 4747
+44 (0)161 877 4746

Middle East & Africa

sales.gcc@globusgroup.com
+971 4 882 9962
+971 4 882 9963

Americas

salesusa@globusgroup.com
+1 83 337 54747