

# DISLEY

## Description and Drawings

Product Code;  
KI1005LS

Kildare

Verified by; Ken  
Issue No 1

Fabric Details. LC307-100D\*40S/CPT-55%Polyester-45%Cotton.

Fabric Colour Lilac Stripe, Weight 112gms +or- 5%.

Block Pattern Reference;  
Tailored Fit with Back Pleats;

Date; 15-11-16

Page 5 of 9

1. 2 piece Collar as MS collar with 5mm top stitch. Double stitch on collar band with plastic collar, stays/bones, 6mm Tie space, interlining Quality-collar-band H837976. Model 837977 Taken from sample collar approve by Sales.
2. 3cm fused front placket, with 5mm top stitching, Permess interlining P904.
3. 2cm front button Chain stitched hem.
4. Mitre Cuff, with 2 buttons & 2 button-holes, with 5mm top stitching. interlining Quality H837976, with 14/4 button and button-hole on sleeve guards.
5. Felled under arm and side seams with 6mm taped seams.
6. 1cm French Taped arm-hole seam.
7. 2 Ply Back yoke with 1cm taped seam, 1mm top edge stitch.

8. Edge stitch front yoke.
9. Last button-hole on front to be horizontal.
10. Round tail bottom, with 6mm double turned hem.
11. 6 button-hole on centre front from size 14 to 16.5, and 7 button-holes from size 17 up; Please Note; Buttons must be cross-stitched with correct stitch count, securely attached and perfectly aligned.
12. 2 back darts.
13. EDITION label with matching size label.
14. EDITION Swing Ticket attach to first button front with Cool Grey cord.
15. Stitch count, 14 to 16 stitches per 2.5cms.

Button Spacing on centre front, first button  
6cms from collar seam to centre button.  
9cms spacing for balance of button holes.

"Red Braid" from shoulder point  
to shoulder point only.

Collar Style  
Semi Cutaway Collar as  
per MS Original sample.  
Tie Space 6mm

Edge Stitch front Yoke.

1cm Taped French  
Seam arm-holes.

Pointed Sleeve  
Guard with 14L  
button & b-hole

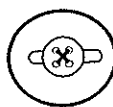
7cm Depth Mitre  
Cuff with 2 buttons &  
button-holes.

3cm Fused Front Placket  
with 5mm top stitching.

2cm Front Hem  
with spare buttons 18 & 14L.

6mm Double turn  
Round Body Hem.

6mm Taped Felled  
under-arm & Side Seams

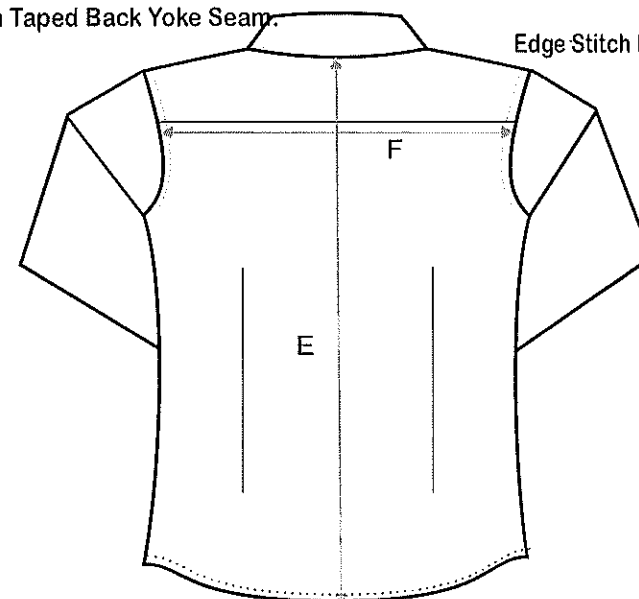


Last Button-hole.  
Horizontal

14 -16 stitches per 2.5cms  
on all seams

Straight Back Yoke  
1cm Taped Back Yoke Seam.

Edge Stitch Back Yoke.



Round Bottom Hem